

## GUIDE TO ENDOSCOPIC APPLICATIONS

Class III Medical Device, 2nd generation cyanoacrylate based, unique to be certified for internal and endovascular use.

**In contact with blood, it quickly polymerises, solidifies and obliterates the vessel in a stable manner, even in coagulopathy or patients on anticoagulant therapy. Temperature of polymerisation: 45°C**

Sclerosis of gastric, oesophageal and duodenal **VARICES**.

Treatment of gastric and duodenal **ULCERS**.

Treatment of digestive **FISTULAS**.

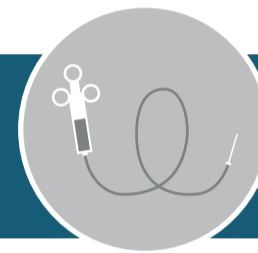
### Material required



5 ml syringes with double-distilled water



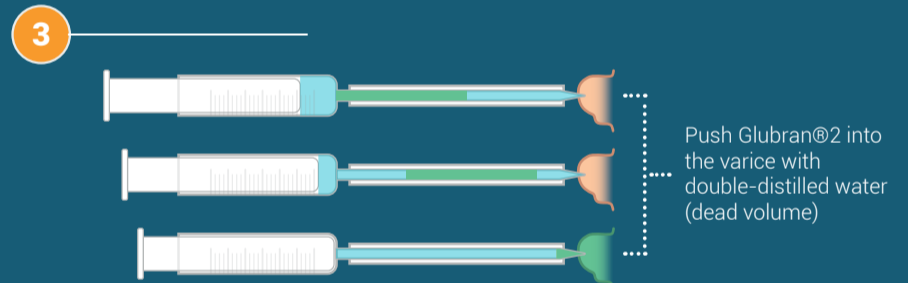
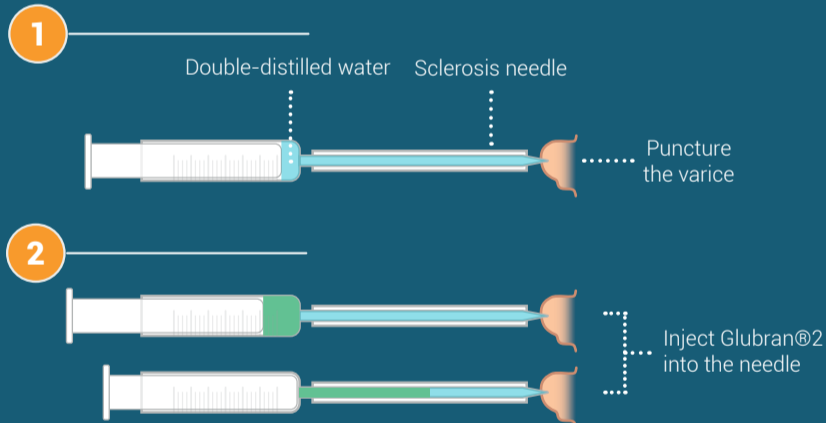
2.5 ml syringe for Glubran<sup>®</sup>2



23-25 G sclerosis needles

### Application mode

Calculate the **dead volume** of the sclerosis needle with **double-distilled** water (volume required to push Glubran<sup>®</sup>2 into the varice).



When the injection is ended:

- Pull the needle out of the varice
- Do not draw up for about 2 minutes

### Injection volumes

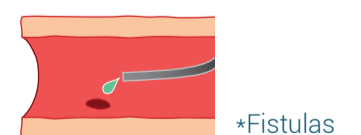
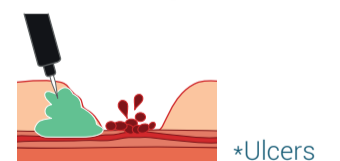
**Do not use more than 1 ml for each injection**

**Gastric varices** If necessary, treat with **more than 1 ml total**, but 1 ml per injection.

**Oesophageal varices** **0.5 ml** injections are recommended. Inject maximum 1 ml per varice.

**Ulcers** In subcutaneous layer, use perivascular injections with **0.3-0.5 ml** bolus, until the haemorrhage stops.

**Fistulas** Use the quantity needed to seal the fistulous tract, by using the sclerosis needle with retracted needle as catheter.



Product	REF	Size	Packaging
Glubran <sup>®</sup> 2	G-NB-2	1 ml	6 vial/box
Glubran <sup>®</sup> 2	G-NB2-50	0,5 ml	10 vial/box
GEM syringe	G-LLS	da 1 ml	100 pieces/box



## CLEANING THE ENDOSCOPE

Once the injection is complete, the instrument must be quickly **withdrawn** and **carefully cleaned**.



ACETONE



BANDAGES



BRUSH



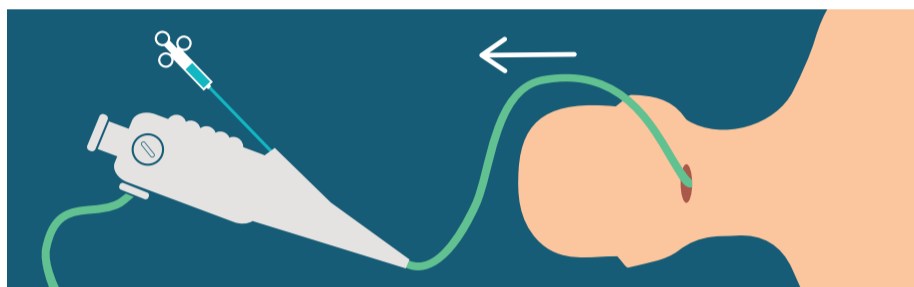
BASIN



SYRINGES

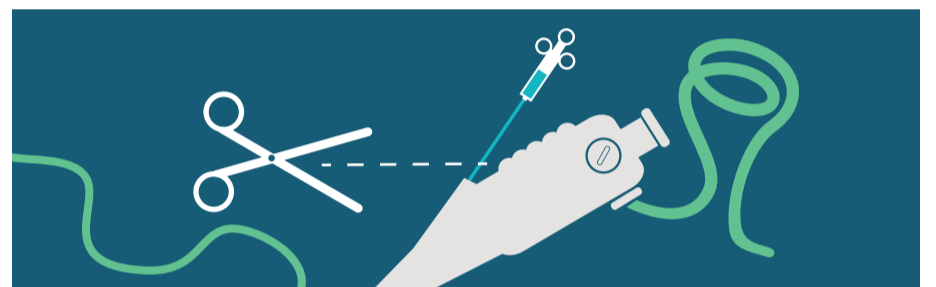
### 1 Remove the endoscope

leaving the sclerosis needle (with needle retracted) in the operator channel



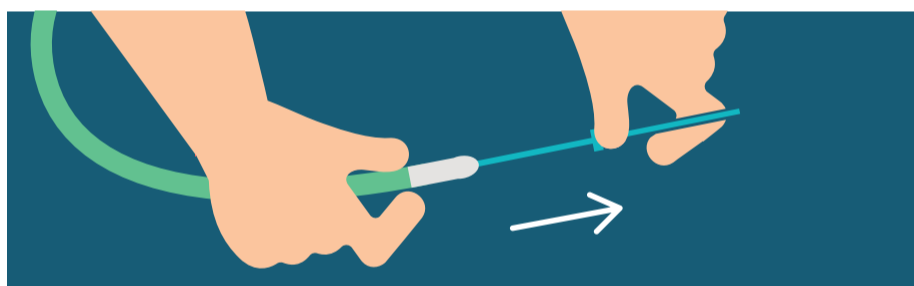
### 2 Cut the sclerosis needle

on the hand piece side.



### 3 Remove the needle

from the final end.



### 4 Wash the lens

with a gauze soaked with acetone.



### 5 Wash the operator channel

with acetone.



### 6 Wipe thoroughly

with the brush.



### 7 Aspiration of acetone

to clean the operator channel.



### 8 Rinse immediately

with running water.



**NOTE:** Do not leave the acetone to soak!

**Cautions:** When cleaning the tool, protect yourself with glasses or visor.

